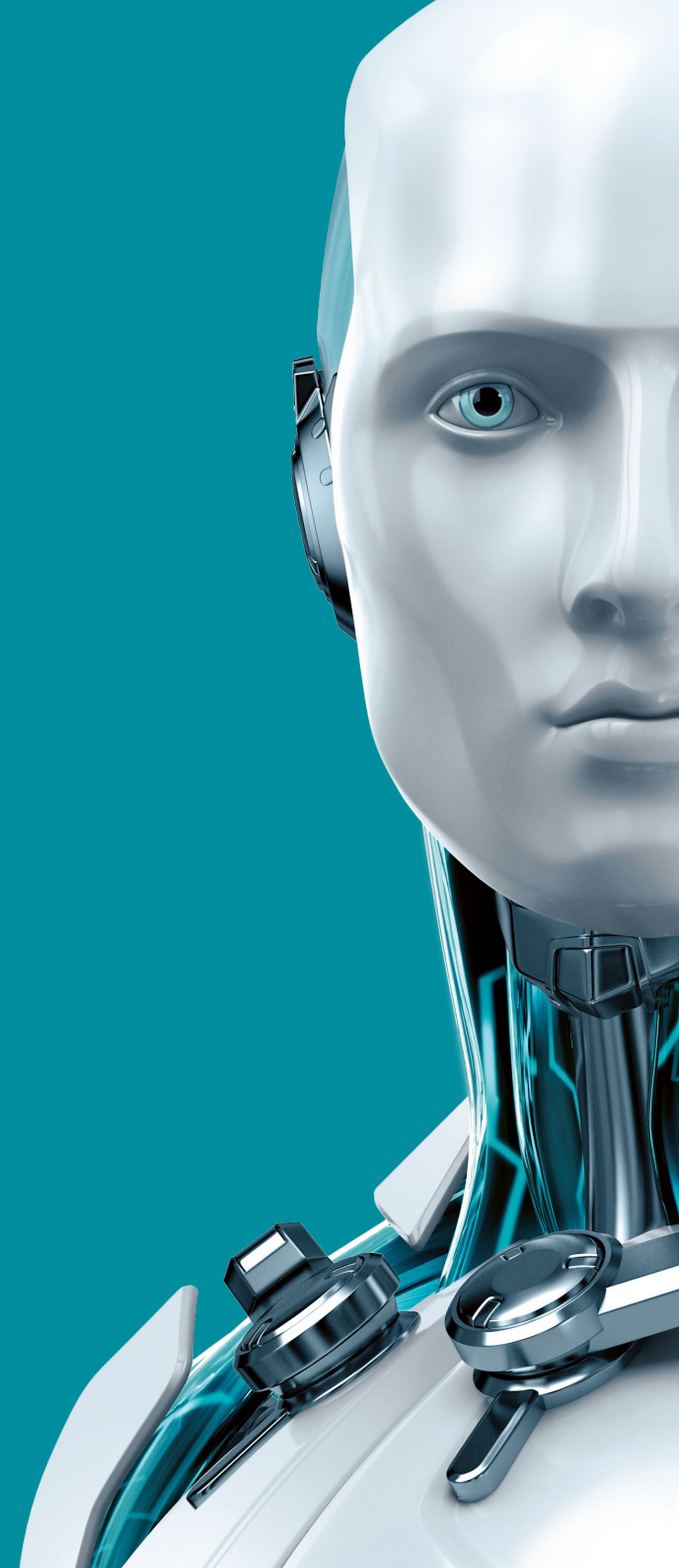




SECURE AUTHENTICATION



ENJOY SAFER TECHNOLOGY™





SECURE AUTHENTICATION

ESET Secure Authentication helps businesses to make access to their data secure. Any organization can set up ESET's two-factor authentication in just 10 minutes – and thus easily reduce the risk of data breaches, caused by stolen, weak or compromised passwords.

The solution consists of the server side and the client side – the latter comes in the form of a mobile app. The authentication options include Push Authentication, as well as generating and delivering one-time passwords (OTPs) via the mobile app, but also via SMS messages or your organization's existing hardware tokens.

Two-factor authentication for extra data protection

You can use ESET Secure Authentication for:

- Accessing your company's VPN
- Remote Desktop Protocol
- Additional authentication for desktop login (signing into an operating system)
- Web/cloud services via Microsoft ADFS 3.0, such as Office 365 and Google Apps
- Various Microsoft Web Apps, such as Outlook Web Access (OWA)
- Exchange Control Panel 2010 & Exchange Administrator Centre 2013
- VMware Horizon View
- RADIUS-based services

ESET Secure Authentication also comes with an API to integrate it with your existing Active Directory-based authentication, as well as with an SDK that easily implements it into any proprietary system.

Business benefits

- Helps prevent the risk of breaches with unique passwords for each access
- Protects against poor password practices
- Gives you the flexibility to define your own OTP delivery channel (e.g. your own SMS gateway)
- Saves costs – no additional hardware needed
- Easy to migrate to and use
- Supports existing hardware tokens to meet compliance requirements
- Also adds 2FA to your cloud applications, such as Office 365 or Google Apps.

IT benefits

- API/SDK for easy integration into proprietary software and business tools
- App works without internet connection (once downloaded)
- Works with a broad range of VPN appliances
- Supports most types of mobile operating systems
- Global technical support in local languages
- Out-of-the-box solution
- Increases productivity and reduces unnecessary friction when accessing trusted sites, thanks to IP whitelisting
- Tools for deployment and configuration in large user environments

Datasheet

Two-Factor Authentication	<p>Mobile-based, two-factor (2FA) authentication for a higher level of security</p> <p>Native support for a broad range of platforms (see Supported platforms overview, below)</p> <p>Software-based solution – no need to carry an additional device or token</p> <p>Convenient for your mobile workforce</p> <p>Support for hardware tokens</p>
Client Side (mobile app)	<p>One-tap installation, simple and effective user interface</p> <p>Compatible with any mobile phone that supports SMS messaging</p> <p>Supports a broad range of mobile operating systems</p> <p>PIN-protected access to prevent fraud in case of device theft or loss</p> <p>Apps available in these languages: English, German, Russian, French, Spanish, Slovak</p>
Authentication Methods	<p>Mobile client app – generates one-time passwords (OTPs); no internet connection required</p> <p>Push Authentication – single-touch authentication via mobile phone (requires mobile client app; works with Android and iOS devices)</p> <p>SMS delivery of one-time passwords</p> <p>Hardware tokens (while the solution does not require hardware tokens to work, it supports all event-based HOTP tokens that are OATH-compliant)</p> <p>Custom methods (e.g. via email)</p>
Server Side	<p>Out-of-the-box solution</p> <p>Easy double-click installation and setup</p> <p>The installer automatically recognizes the OS and selects all suitable components</p> <p>Interactive installer, drop-in installation into ADFS</p>
Custom Integration Options	<p>In Active Directory environment, use either ESET Secure Authentication API or User Management API for easy integration into proprietary systems</p> <p>SDK allows for implementation for non-Active Directory users</p>
Remote Management	<p>Supports Microsoft Management Console (MMC)</p> <p>Active Directory integration</p> <p>ESET Secure Authentication extends Active Directory Users & Computers (ADUC plugin) with additional features to enable managing the users' two-factor authentication settings</p>



FREE LOCAL
TECHNICAL
SUPPORT

Do More with the help of our specialists.
On call to provide technical support when
you need it, in your language.

Supported platforms overview

For detailed technical requirements, please consult the ESET Secure Authentication product manual, available at this address: http://download.eset.com/manuals/eset_esa_product_manual_enu.pdf

Remote Login Platforms	Remote Desktop Protocol	
	VPN Protection: Barracuda, Cisco ASA, Citrix Access Gateway, Citrix NetScaler, Check Point Software, Cyberoam, F5 FirePass, Fortinet FortiGate, Juniper, Palo Alto, SonicWall	
Local Login Protection (Windows)	Windows 7 and later	Windows Server 2008 R2 and later
Active Directory Federation Services	Microsoft ADFS 3.0 (Windows Server 2012 R2)	
Supported VDI Platforms	VMware Horizon View	Citrix XenApp
Microsoft Web Applications	Microsoft Exchange 2007 – Outlook Web Access Microsoft Exchange 2010 – Outlook Web App – Exchange Control Panel Microsoft Exchange 2013 – Outlook Web App – Exchange Admin Center	Microsoft Dynamics CRM 2011, 2013, 2015 Microsoft SharePoint 2010, 2013 Microsoft Remote Desktop Web Access Microsoft Terminal Services Web Access Microsoft Remote Web Access
Custom Integration	ESET Secure Authentication easily integrates with your RADIUS-based services, as well as via the ESET Secure Authentication API or the User Management API to your existing Active Directory-based authentication. Non Active Directory customers with custom systems can use the easy-to-deploy SDK.	
Operating Systems (Server Side)	Windows Server 2003 (32&64bit), 2003 R2 (32&64bit), 2008 (32&64bit), 2008 R2, 2012, 2012 R2 Windows Small Business Server 2008, 2011 Windows Server 2012 Essentials, 2012 R2 Essentials Management tools are also supported on client operating systems from Windows XP SP3 onwards, in both 32-bit and 64-bit versions.	
Supported Mobile Phone Platforms (Client-Side App)	iOS Android Windows Phone Windows Mobile	BlackBerry Symbian – all supporting J2ME All J2ME enabled phones

Copyright © 1992 – 2017 ESET, spol. s r. o. ESET, ESET logo, ESET android figure, NOD32, ESET Smart Security, SysInspector, ThreatSense, ThreatSense.Net, LiveGrid, LiveGrid logo and/or other mentioned products of ESET, spol. s r. o., are registered trademarks of ESET, spol. s r. o. Windows® is a trademark of the Microsoft group of companies. Other here mentioned companies or products might be registered trademarks of their proprietors. Produced according to quality standards of ISO 9001:2008.